

FAUCETS & BATH ACCESSORIES



Teapot Kitchen Faucet - Widespread

ORDER QUANTITY	COMPUTER NUMBER	TBA PART NUMBER	DESCRIPTION	SIZE	INNER PACK	MASTER PACK	WT
_____	191-1407	2002WL-CP	Widespread Teapot Kitchen Faucet w/spray - Chrome				
_____	191-1408	2002-WL-ORB	Widespread Teapot Kitchen Faucet w/spray - Oil Rubbed Finish				
_____	191-1409	2002-WL-SN	Widespread Teapot Kitchen Faucet w/spray - Brushed Satin Finish				



Teapot Kitchen Faucet

ORDER QUANTITY	COMPUTER NUMBER	TBA PART NUMBER	DESCRIPTION	SIZE	INNER PACK	MASTER PACK	WT
_____	191-1410	2011W-TS-CP	Teapot Kitchen Faucet w/spray - Chrome				
_____	191-1411	2011W-TS-ORB	Teapot Kitchen Faucet w/spray - Oil Rubbed Bronze Finish				
_____	191-1412	2011W-TS-SN	Teapot Kitchen Faucet w/spray - Brushed Satin Nickel Finish				



Teapot Lavatory Faucet

ORDER QUANTITY	COMPUTER NUMBER	TBA PART NUMBER	DESCRIPTION	SIZE	INNER PACK	MASTER PACK	WT
_____	191-1413	1002K-CP	Teapot Lavatory Faucet w/4" Center - Chrome				
_____	191-1414	1002K-ORB	Teapot Lavatory Faucet w/4" Center - Oil Rubbed Bronze Finish				
_____	191-1415	1002-K-SN	Teapot Lavatory Faucet w/4" Center - Satin Nickel Finish				
_____	191-1416	8200-ORB	Widespread Kitchen Faucet w/spray & Soap Dispenser - Oil Rubbed Bronze Finish				



Teapot Roman Tub Filler

ORDER QUANTITY	COMPUTER NUMBER	TBA PART NUMBER	DESCRIPTION	SIZE	INNER PACK	MASTER PACK	WT
_____	201-1426	2002T-CP	Roman Tub Filler w/o spray - Chrome				
_____	201-1427	2002T-ORB	Roman Tub Filler w/o spray - Oil-Rubbed Bronze Finish				
_____	201-1428	2002T-SN	Roman Tub Filler w/o Spray - Satin Nickel Finish				

All TBA Faucets & Bath Accessories Meet NSF-61-9 Specifications



Faucets & Bath Accessories



Widespread Kitchen Faucet



ORDER QUANTITY	COMPUTER NUMBER	TBA PART NUMBER	DESCRIPTION	SIZE	INNER PACK	MASTER PACK	WT
	191-1419	8200-CP	Widespread Kitchen Faucet w/spray & Soap Dispenser - Chrome				



Single Lever Tub & Shower Faucet



ORDER QUANTITY	COMPUTER NUMBER	TBA PART NUMBER	DESCRIPTION	SIZE	INNER PACK	MASTER PACK	WT
	211-1423	1016K-CP	Single-Lever Tub & Shower Faucet - Chrome				
	211-1424	1016K-ORB	Single-Lever Tub & Shower Faucet - Oil-Rubbed Bronze Finish				
	211-1425	1016K-SN	Single-Lever Tub & Shower Faucet - Satin Nickel Finish				

Lavatory Faucet – Ceramic Disc

- 4" Centerset
- Twin Acrylic Handle
- High-Quality Chrome or Polished Brass Plated Finish
- 2.0 GPM at 60 PSI Maximum Flow Rate
- 1/2" IPS Connections
- Packaged in Display Carton



ORDER QUANTITY	COMPUTER NUMBER	TBA PART NUMBER	DESCRIPTION	SIZE	INNER PACK	MASTER PACK	WT
	006-398	441-022CP	Chrome with Brass Pop-Up	4"	1	6	34
	006-399	441-022BP	Polished Brass with Brass Pop-Up	4"	1	6	34
	006-402	441-024CP	Chrome with ABS Pop-Up	4"	1	6	34
	006-403	441-024BP	Polished Brass with ABS Pop-Up	4"	1	6	34

Tub and Shower Combination - Twin Handle – Ceramic Disc

- 1/2" IPS Connection Inlet
- Twin Acrylic Handles
- High-Quality Chrome Plated Finish
- Plastic Shower Arm, Tub Spout & ABS Showerhead
- 2.5 GPM at 80 PSI Maximum Flow Rate
- Matches Twin Handle Lavatory
- Packaged in Display Bag
- **Replacement Parts:**
004-699/3092 Ceramic Disc



ORDER QUANTITY	COMPUTER NUMBER	TBA PART NUMBER	DESCRIPTION	SIZE	INNER PACK	MASTER PACK	WT
	006-429	4B400CP	Tub and Shower - Chrome	8"	1	6	24
	006-430	4B400BP	Tub and Shower - Polished Brass	8"	1	6	24

Faucets & Bath Accessories



Lavatory Faucet – Ceramic Disc

- 4" Centerset w/**Brass Pop-Up**
- Decorator Porcelain & Oak Lever Handles
- High-Quality Chrome or Polished Brass Plated Finish
- 2.0 GPM at 60 PSI Maximum Flow Rate
- 1/2" IPS Connections
- Packaged in Display Carton

ORDER QUANTITY	COMPUTER NUMBER	TBA PART NUMBER	DESCRIPTION	SIZE	INNER PACK	MASTER PACK	WT
	006-400	441-832CP	Chrome with Brass Pop-Up	4"	1	6	34
	006-401	441-832BP	Polished Brass with Brass Pop-Up	4"	1	6	34



Tub and Shower Combination - Twin Lever – Ceramic Disc

- 1/2" IPS Connection Inlet
- Two Decorator Porcelain Handles
- High-Quality Chrome or Polished Brass Plated Finish
- Solid Brass Tub Spout
- Plastic Shower Arm & ABS Showerhead
- 2.5 GPM at 80 PSI Maximum Flow Rate
- Matches Twin Lever Lavatory
- Packaged in Display Carton
- Replacement Parts:
004-699/3092 Ceramic Disc

ORDER QUANTITY	COMPUTER NUMBER	TBA PART NUMBER	DESCRIPTION	SIZE	INNER PACK	MASTER PACK	WT
	006-427	4B401CP	Tub and Shower - Chrome	8"	1	6	24
	006-428	4B401BP	Tub and Shower - Polished Brass	8"	1	6	24

Kitchen Faucet - Twin Lever With Spray

- 8" Centerset
- Twin Lever Handle w/Spray
- High-Quality Chrome-Plated Finish
- Solid Brass Construction
- Includes Decorator Porcelain & Oak Handles
- 1/2" IPS Connections
- 2.0 GPM at 60 PSI Maximum Flow Rate
- Packaged in Display Carton
- Replacement Parts:
004-699/3092 Ceramic Disc
005-343/0039 Diverter



ORDER QUANTITY	COMPUTER NUMBER	TBA PART NUMBER	DESCRIPTION	SIZE	INNER PACK	MASTER PACK	WT
	006-432	L4G002CP	Kitchen Faucet + Spray - Chrome	8"	1	6	23

Kitchen Faucet - Twin Handle With Spray

- 8" Centerset
- Twin Acrylic Handle w/Spray
- High-Quality Chrome-Plated Finish
- Solid Brass Construction
- 1/2" IPS Connections
- 2.0 GPM at 60 PSI Maximum Flow Rate
- Packaged in Display Carton
- Replacement Parts:
004-699/3092 Ceramic Disc
005-343/0039 Diverter



ORDER QUANTITY	COMPUTER NUMBER	TBA PART NUMBER	DESCRIPTION	SIZE	INNER PACK	MASTER PACK	WT
	006-433	L4G022CP	Kitchen Faucet + Spray - Chrome	8"	1	6	24

Kitchen Faucet - High Rise Twin Lever With Spray

- 8" Centerset
- Twin Lever High-Rise w/Spray
- High-Quality Chrome or Polished Brass Plated Finish
- Solid Brass Construction
- Includes Decorator Porcelain Handles
- 1/2" IPS Connections
- 2.0 GPM at 60 PSI Maximum Flow Rate
- Packaged in Display Carton
- Replacement Parts:
004-699/3092 Ceramic Disc
005-343/0039 Diverter



ORDER QUANTITY	COMPUTER NUMBER	TBA PART NUMBER	DESCRIPTION	SIZE	INNER PACK	MASTER PACK	WT
	006-434	N67012CP	Kitchen Faucet + Spray - Chrome	8"	1	6	24
	006-435	N67012BP	Kitchen Faucet + Spray - Pol. Brass	8"	1	6	24

 Symbol Indicates Universally Accessible Products

Faucets & Bath Accessories

Tub and Shower Combination - Single Control - Universally Accessible

Ceramic Disc + Anti-Scald

- 1/2" IPS Connection Inlet
- Universally Accessible Handle
- High-Quality Chrome Plated Finish
- Plastic Shower Arm, Face Plate & Tub Spout
- ABS Showerhead
- Matches Single Lever Lavatory
- Packaged in Display Carton
- Replacement Parts:
004-699/3092 Ceramic Disc



ORDER QUANTITY	COMPUTER NUMBER	TBA PART NUMBER	DESCRIPTION	SIZE	INNER PACK	MASTER PACK	WT
	006-609	SLCDTS1-CP	Single Lever/Tub and Shower - Chrome		1	6	28

Lavatory Faucet - Twin Handles

- 4" Centerset
- Twin Acrylic Handles
- High-Quality Chrome Plated Finish
- 2.0 GPM at 60 PSI Maximum Flow Rate
- Washerless w/1/2" IPS Connections
- Packaged in Display Carton
- Replacement Parts:
004-699/3092 Replacement Stem
002-679/0001 Seat & Springs



ORDER QUANTITY	COMPUTER NUMBER	TBA PART NUMBER	DESCRIPTION	SIZE	INNER PACK	MASTER PACK	WT
	002-670	44854 CP	Chrome with ABS Pop-Up	4"	1	6	34
	003-847	44852 CP	Chrome with Brass Pop-Up	4"	1	6	34
	002-979	LPU44850 CP	Chrome Less Pop-Up	4"	1	6	32

Tub And Shower Combination - Twin Handle

- 1/2" IPS Connection Inlet
- Twin Acrylic Handles
- High-Quality Chrome Plated Finish
- Plastic Shower Arm, Tub Spout & ABS Showerhead
- 2.5 GPM at 80 PSI Maximum Flow Rate
- Matches Twin Handle Lavatory
- Washerless
- Packaged in Display Bag
- Replacement Parts:
004-699/3092 Replacement Stem
002-679/0001 Seat & Springs



ORDER QUANTITY	COMPUTER NUMBER	TBA PART NUMBER	DESCRIPTION	SIZE	INNER PACK	MASTER PACK	WT
	002-656	28531 CP	Tub and Shower - Chrome	8"	1	6	24
	002-990	LSH28510 CP	Tub Filler - Chrome	8"	1	6	23
	003-326	LSH28510 BP	Tub Filler - Polished Brass	8"	1	6	23
	002-988	28501 CP	Shower Faucet - Chrome	8"	1	6	23

Tub And Shower Combination - Triple Handle

- 1/2" IPS Connection Inlet
- Three Acrylic Handles
- High-Quality Chrome or Polished Brass Plated Finish
- Solid Brass Tub Spout
- Plastic Shower Arm & ABS Showerhead
- 2.5 GPM at 80 PSI Maximum Flow Rate
- Matches Twin Handle Lavatory
- Washerless
- Packaged in Display Carton
- Replacement Parts:
004-699/3092 Replacement Stem
003-745/3079 Replacement Diverter
002-679/0001 Seat & Springs



ORDER QUANTITY	COMPUTER NUMBER	TBA PART NUMBER	DESCRIPTION	SIZE	INNER PACK	MASTER PACK	WT
	002-659	38511 CP	Tub and Shower - Chrome	8"	1	6	24

Faucets & Bath Accessories



Kitchen Faucet - Twin Handle With Spray

- 8" Centerset
- Washerless Twin Acrylic Handle w/Spray
- High-Quality Chrome-Plated Finish
- Solid Brass Construction
- 1/2" IPS Connections
- 2.0 GPM at 60 PSI Maximum Flow Rate
- Packaged in Display Carton
- Replacement Parts:
004-699/3092 Hot Replacement Stem
002-679-0001 Seat & Springs
005-343/0039 Diverter

ORDER QUANTITY	COMPUTER NUMBER	TBA PART NUMBER	DESCRIPTION	SIZE	INNER PACK	MASTER PACK	WT
	002-675	87852 CP	Kitchen Faucet with Spray - Chrome	8"	1	6	26
	002-674	87850 CP	Kitchen Faucet Less Spray - Chrome	8"	1	6	24



Laundry Faucet - Twin Handle

- Chrome Finish in Plain Box
- Washerless
- Replacement Parts:
004-699/3092 Hot & Cold Replacement Cartridge

ORDER QUANTITY	COMPUTER NUMBER	TBA PART NUMBER	DESCRIPTION	SIZE	INNER PACK	MASTER PACK	WT
	004-205	57800 CHR	Brass Laundry Faucet - Chrome	4"	1	6	8



Lavatory Faucet - Single Control

- 4" Centerset
- Acrylic Handle
- High-Quality Chrome or Polished Brass Plated Finish
- 2.0 GPM at 60 PSI Maximum Flow Rate
- Washerless w/Stainless Steel Ball
- Packaged in Display Carton
- Replacement Parts:
201-0009/0008 Stainless Steel Ball
002-679/0001 Seat & Springs

ORDER QUANTITY	COMPUTER NUMBER	TBA PART NUMBER	DESCRIPTION	SIZE	INNER PACK	MASTER PACK	WT
	002-663	40214 CP	Chrome with ABS Pop-Up	4"	1	6	36
	003-724	40212 CP	Chrome with Brass Pop-Up	4"	1	6	36



Tub And Shower Combination - Single Control

- 1/2" IPS Connection Inlet
- Acrylic Handle
- High-Quality Chrome or Polished Brass Plated Finish
- Plastic Shower Arm, Face Plate & Tub Spout
- ABS Showerhead
- Matches Single Lever Lavatory
- 2.5 GPM at 80 PSI Maximum Flow Rate
- Washerless w/Stainless Steel Ball
- Packaged in Display Carton
- Replacement Parts:
201-0009/0008 Stainless Steel Ball
002-679/0001 Seat & Springs

ORDER QUANTITY	COMPUTER NUMBER	TBA PART NUMBER	DESCRIPTION	SIZE	INNER PACK	MASTER PACK	WT
	002-652	12131 CP	Tub and Shower - Chrome		1	6	24
	003-106	12101 CP	Shower Faucet - Chrome		1	6	21



Lavatory Faucet - Twin Lever Handles

- 4" Centerset w/**Brass Pop-Up**
- Decorator Porcelain & Oak Lever Handles
- High-Quality Chrome & Polished Brass Plated Finish
- 2.0 GPM at 60 PSI Maximum Flow Rate
- Washerless w/1/2" IPS Connections
- Packaged in Display Carton
- Replacement Parts:
004-699/3092 Replacement Stem
002-679/0001 Seat & Springs

ORDER QUANTITY	COMPUTER NUMBER	TBA PART NUMBER	DESCRIPTION	SIZE	INNER PACK	MASTER PACK	WT
	002-665	44622 CPOL	Chrome with Brass Pop-Up	4"	1	6	21

 Symbol Indicates Universally Accessible Products

Faucets & Bath Accessories

Lavatory Faucet - J-Style Swing Spout

- 4" Centerset w/**Brass Pop-Up**
- Decorator Oak & Porcelain Lever Handles
- High-Quality Chrome & Polished Brass Plated Finish
- Solid Brass Swivel J-Spout
- 2.0 GPM at 60 PSI Maximum Flow Rate
- Washerless w/1/2" IPS Connections
- Packaged in Display Carton
- Replacement Parts:
004-699/3092 Replacement Stem
002-679/0001 Seat & Springs



ORDER QUANTITY	COMPUTER NUMBER	TBA PART NUMBER	DESCRIPTION	SIZE	INNER PACK	MASTER PACK	WT
	005-472	2J42	2 Lever J-Spout - Chrome	4"	1	6	22

Tub And Shower Combination - Twin Lever

- 1/2" IPS Connection Inlet
- Two Decorator Porcelain & Oak Lever Handles
- High-Quality Chrome or Polished Brass Plated Finish
- Solid Brass Tub Spout
- Plastic Shower Arm & ABS Showerhead
- 2.5 GPM at 80 PSI Maximum Flow Rate
- Matches Twin Lever Lavatory
- Washerless
- Packaged in Display Carton
- Replacement Parts:
004-699/3092 Hot Replacement Stem
004-700/3093 Cold Replacement Stem
002-679/0001 Seat & Springs



ORDER QUANTITY	COMPUTER NUMBER	TBA PART NUMBER	DESCRIPTION	SIZE	INNER PACK	MASTER PACK	WT
	002-653	26231CP OL	Tub and Shower - Chrome	8"	1	6	24
	002-993	26231BP OL	Tub and Shower - Polished Brass	8"	1	6	24

Bar Faucet - Twin Lever

- 4" Centerset
- Decorator Lever Handles
- High-Quality Chrome & Polished Brass Plated Finish
- Solid Brass Swivel Spout
- 2.0 GPM at 60 PSI Maximum Flow Rate
- Washerless w/1/2" IPS Connections
- Packaged in Display Carton
- Replacement Parts:
004-699/3092 Hot Replacement Stem
004-700/3093 Cold Replacement Stem
002-679/0001 Seat & Springs



ORDER QUANTITY	COMPUTER NUMBER	TBA PART NUMBER	DESCRIPTION	SIZE	INNER PACK	MASTER PACK	WT
	003-221	47620 CP-OL	Basin Faucet - Chrome	4"	1	6	18

Kitchen Faucet - High Rise Twin Lever With Spray

- 8" Centerset
- Washerless Twin Lever High-Rise w/Spray
- High-Quality Chrome Plated Finish
- Solid Brass Construction
- Includes Decorator Porcelain & Oak Handles
- 1/2" IPS Connections
- 2.0 GPM at 60 PSI Maximum Flow Rate
- Packaged in Display Carton
- Replacement Parts:
004-699/3092 Hot Replacement Stem
004-700/3093 Cold Replacement Stem
002-679/0001 Seat & Springs
005-343/0039 Diverter



ORDER QUANTITY	COMPUTER NUMBER	TBA PART NUMBER	DESCRIPTION	SIZE	INNER PACK	MASTER PACK	WT
	002-672	81622 CP-OL	Kitchen Faucet with Spray - Chrome	8"	1	6	24

Faucets & Bath Accessories

Kitchen Faucet - Twin Lever With Spray

- 8" Centerset
- Washerless Twin Lever Handle w/Spray
- High-Quality Chrome Plated Finish
- Solid Brass Construction
- Includes Decorator Porcelain & Oak Handles
- 1/2" IPS Connections
- 2.0 GPM at 60 PSI Maximum Flow Rate
- Packaged in Display Carton
- Replacement Parts:
 - 004-699/3092 Hot Replacement Stem
 - 004-700/3093 Cold Replacement Stem
 - 002-679/0001 Seat & Springs
 - 005-343/0039 Diverter



ORDER QUANTITY	COMPUTER NUMBER	TBA PART NUMBER	DESCRIPTION	SIZE	INNER PACK	MASTER PACK	WT
	002-673	87622 CP-OL	Kitchen Faucet with Spray - Chrome	8"	1	6	23

Lavatory Faucet - 4" Twin Lever Handle with Round Escutcheon

- Quality brass construction
- Interchangeable with Delta repair parts
- Meets minimum low lead requirements
- 2.0 GPM at 60 PSI
- 1/2" IPS Connections
- Packaged in Display Carton



ORDER QUANTITY	COMPUTER NUMBER	TBA PART NUMBER	DESCRIPTION	SIZE	INNER PACK	MASTER PACK	WT
	006-571	BROOKSFLOW-LPB	Polished Brass Finish - PVD	4"	1	6	34
	006-572	BROOKSFLOW-LCP	Polished Chrome Finish	4"	1	6	34
	201-0429	BROOKSFLOW-SATIN	Satin Nickel Finish	4"	1	6	34

Brookflow Twin Handle Tub & Shower

ORDER QUANTITY	COMPUTER NUMBER	TBA PART NUMBER	DESCRIPTION	SIZE	INNER PACK	MASTER PACK	WT
	211-0006	BROOKSFLOW-CP	Polished Chrome Finish				
	211-0007	BROOKSFLOW-PVD-PB/CP	PVD Polished Brass and Chrome Finish				
	211-0008	BROOKSFLOW-PVD-PB	PVD Polished Brass Finish				
	211-0437	BROOKSFLOW-SATIN	Satin Nickel Finish				



Kitchen Faucet - Dual Lever Handles

- 8" Centerset
- Washerless Twin Lever Handle w/Spray
- High-Quality Chrome Plated Finish
- Solid Brass Construction
- 1/2" IPS Connections
- 2.0 GPM at 60 PSI Maximum Flow Rate
- Packaged in Display Carton



ORDER QUANTITY	COMPUTER NUMBER	TBA PART NUMBER	DESCRIPTION	SIZE	INNER PACK	MASTER PACK	WT
	006-573	BROOKSFLOW-KCP	Chrome with Dual Lever Handles, Round Style Spout and Escutcheon	8"	1	6	24

Faucets & Bath Accessories

Brookflow Kitchen Faucet - 8" w/Gooseneck Spout

- 8" Centerset
- Lever Handles w/Spray
- 1/4 Turn Operation
- 2.0 GPM
- 1/2" IPS Connections
- Washerless



ORDER QUANTITY	COMPUTER NUMBER	TBA PART NUMBER	DESCRIPTION	SIZE	INNER PACK	MASTER PACK	WT
	191-0430	2011WMS	Brushed Satin Finish	8"	1	6	24

Brookflow Bar Faucet

- 4" Center
- Lever Handles
- 1/4 Turn Operation
- 2.0 GPM
- 1/2" IPS Connections



ORDER QUANTITY	COMPUTER NUMBER	TBA PART NUMBER	DESCRIPTION	SIZE	INNER PACK	MASTER PACK	WT
	201-0428	2021CP	Deluxe Chrome Finish	4"	1	6	18

Brookflow Widespread Lavatory Faucet

- 8" - 15" Centers
- Lever Handles w/Spray
- Ceramic Disc
- 2.5 GPM
- Brass Pop-Up



ORDER QUANTITY	COMPUTER NUMBER	TBA PART NUMBER	DESCRIPTION	SIZE	INNER PACK	MASTER PACK	WT
	211-0433	2002-2CP	Deluxe Chrome Finish	8"-15"	1	6	36
	211-0434	2002-2PB-PVD	Polished Brass - PVD Finish	8"-15"	1	6	36

Deluxe "C" Spout Roman Tub Filler

- 8" - 15" Centers
- Delux Eurostyle Handles
- 14 GPM
- Ceramic Disc



ORDER QUANTITY	COMPUTER NUMBER	TBA PART NUMBER	DESCRIPTION	SIZE	INNER PACK	MASTER PACK	WT
	211-0435	1015CP	Deluxe Chrome Finish	8"-15"	1	6	41
	211-0436	1015PB/CD	Polished Brass - PVD Finish	8"-15"	1	6	41

Brookflow Roman Tub Filler

- 8" - 15" Centers
- Lever Handles
- 14 GPM
- Ceramic Disc



ORDER QUANTITY	COMPUTER NUMBER	TBA PART NUMBER	DESCRIPTION	SIZE	INNER PACK	MASTER PACK	WT
	211-0431	2002-RTCP	Deluxe Chrome Finish	8"-15"	6	6	40
	211-0432	2002-RTPB/PVD	Polished Brass - PVD Finish	8"-15"	6	6	40

Faucets & Bath Accessories

Lavatory Faucet

- Quality Brass Construction
- Interchangeable with Delta Repair Parts
- Meets Minimum Low Lead Requirements
- Polished Brass Plated Finish
- 2.0 GPM at 60 PSI
- 1/2" IPS Connections
- Packaged in Display Carton



ORDER QUANTITY	COMPUTER NUMBER	TBA PART NUMBER	DESCRIPTION	SIZE	INNER PACK	MASTER PACK	WT
	006-569	LH001CP	Chrome with Single-Lever Loop Handle	4"	1	6	31

Tub and Shower Set

- 1/2" IPS Connection
- Water Saver Shower Head
- High-Quality Brass Construction
- 2.5 GPM at 80 PSI Maximum Flow Rate
- Interchangeable with Delta Repair Parts
- Matches lavatory faucet 006-569
- Packaged in Display Carton



ORDER QUANTITY	COMPUTER NUMBER	TBA PART NUMBER	DESCRIPTION	SIZE	INNER PACK	MASTER PACK	WT
	006-570	LH002CP	Chrome with Single-Lever Loop Handle	4"	1	6	23

Kitchen Faucet - Single Control With Spray

- 8" Centerset
- Washerless Single Lever w/Spray
- High-Quality Chrome Plated Finish
- Solid Brass Construction
- 1/2" IPS Connections
- 2.0 GPM at 60 PSI Maximum Flow Rate
- 201-0009 Stainless Steel Ball
- Packaged in Display Carton
- Replacement Parts:
002-679/0001 Seat & Springs
002-686/0011 Diverter



ORDER QUANTITY	COMPUTER NUMBER	TBA PART NUMBER	DESCRIPTION	SIZE	INNER PACK	MASTER PACK	WT
	006-431	N38002CP	Kitchen Faucet + Spray - Chrome	8"	1	6	29

Lavatory Faucet - Euro-Style

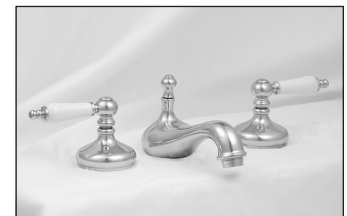
- 4" Euro-Style Centerset w/**Brass Pop-Up**
- Decorator Oak & Porcelain Handles
- High-Quality Chrome & Polished Brass Plated Finish
- Solid Brass Construction
- 2.0 GPM at 60 PSI Maximum Flow Rate
- Washerless w/1/2" IPS Connections
- Packaged in Display Carton
- Replacement Parts:
004-699/3092 Replacement Stems
002-679/0001 Seat & Springs



ORDER QUANTITY	COMPUTER NUMBER	TBA PART NUMBER	DESCRIPTION	SIZE	INNER PACK	MASTER PACK	WT
	003-102	53512BP-PO	Polished Brass, Brass Pop-Up	4"	1	6	21
	003-281	53512CP-PO	Chrome, Brass Pop-Up	4"	1	6	21

Lavatory Faucet - Euro-Style 6"-12" Wide Spread

- 6"-12" Euro-Style Centerset w/**Brass Pop-Up**
- Decorator Oak & Porcelain Handles
- High-Quality Chrome & Polished Brass Plated Finish
- Solid Brass Construction
- 2.0 GPM at 60 PSI Maximum Flow Rate
- Washerless w/1/2" IPS Connections
- Packaged in Display Carton
- Replacement Parts:
004-699/3092 Replacement Stem
002-679/0001 Seat & Springs



ORDER QUANTITY	COMPUTER NUMBER	TBA PART NUMBER	DESCRIPTION	SIZE	INNER PACK	MASTER PACK	WT
	003-280	62542CP-OM	Brass Pop-Up - Chrome	6"- 12"	1	4	21
	003-100	62542BP-OM	Brass Pop-Up - Polished Brass	6"- 12"	1	4	21

 Symbol Indicates Universally Accessible Products

Faucets & Bath Accessories

Tub And Shower Combination - Euro-Style - Three Valve

- 1/2" IPS Connection Inlet
- Three Decorator Oak & Porcelain Handles
- High-Quality Chrome or Polished Brass Plated Finish
- Solid Brass Tub Spout, Plastic Shower Arm & Showerhead
- 2.5 GPM at 80 PSI Maximum Flow Rate
- Matches Twin Lever Euro Lavatory
- Washerless
- Packaged in Display Carton
- Replacement Parts:
004-699/3092 Hot Replacement Stem
004-700/3093 Cold Replacement Stem
003-745/3079 Replacement Diverter
002-679/0001 Seat & Springs

ORDER QUANTITY	COMPUTER NUMBER	TBA PART NUMBER	DESCRIPTION	SIZE	INNER PACK	MASTER PACK	WT
	003-872	37242BP-O	3 Valve - Polished Brass	8"	1	6	42

Lavatory Faucet - Euro-Style

- 6-12" Centerset w/**Brass Pop-Up**
- Decorator Octagonal Handles
- High-Quality Chrome, Satin & PVD Finishes
- Solid Brass C-Spout
- 2.0 GPM at 60 PSI Maximum Flow Rate
- Ceramic Disc w/1/2" IPS Connections
- Packaged in Display Carton
- Replacement Parts:
004-699/3092 Replacement Stem



ORDER QUANTITY	COMPUTER NUMBER	TBA PART NUMBER	DESCRIPTION	SIZE	INNER PACK	MASTER PACK	WT
	005-544	CWE306BP-PVD	Euro-Style Polish Brass-PVD	6" - 12"	1	6	24
	005-545	CWE306CP	Euro-Style Chrome	6" - 12"	1	6	24
	201-0539	CWE306SF	Euro-Style Satin Nickel	6" - 12"	1	6	24

Roman Tub Filler - Swan Neck Spout

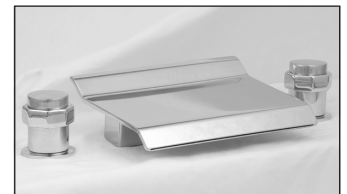
- Roman Tub Swan Neck
- Solid Brass Construction
- Decorator Octagonal Handles
- High-Quality Chrome, Satin & PVD Finishes
- Solid Brass C-Spout
- 14 GPM at 60 PSI Maximum Flow Rate
- Ceramic Disc w/1/2" IPS Connections
- Packaged in Display Carton
- Replacement Parts:
004-699/3092 Replacement Stem



ORDER QUANTITY	COMPUTER NUMBER	TBA PART NUMBER	DESCRIPTION	SIZE	INNER PACK	MASTER PACK	WT
	004-027	UW390CP	Swan Spout - Chrome	6"-12"	1	4	40
	003-996	UW390BPPVD	Swan Spout - Polished Brass-PVD	6"-12"	1	4	40
	211-0537	UW390SF	Swan Spout - Satin Nickel	6"-12"	1	4	40

Roman Tub Filler - Waterfall Spout

- Roman Tub Waterfall
- Solid Brass Construction
- Decorator Octagonal Handles
- High-Quality Chrome, Satin & PVD Finishes
- Solid Brass Waterfall Spout
- 14 GPM at 60 PSI Maximum Flow Rate
- Ceramic Disc w/1/2" IPS Connections
- Packaged in Display Carton
- Replacement Parts:
004-699/3092 Replacement Stem



ORDER QUANTITY	COMPUTER NUMBER	TBA PART NUMBER	DESCRIPTION	SIZE	INNER PACK	MASTER PACK	WT
	003-997	TW390BP	Waterfall Spout - Polished Brass	6"-12"	1	4	40
	004-028	TW390CP	Waterfall Spout - Chrome	6"-12"	1	4	40
	211-0538	TW390SF	Waterfall Spout - Satin Nickel	6"-12"	1	4	40

Faucets & Bath Accessories



Roman Tub Filler Without Personal Shower

- Roman Tub Straight Spout
- Twin Acrylic Handles
- High-Quality Chrome & PVD Finishes
- Zinc Tub Spout
- **14 GPM** at 60 PSI Maximum Flow Rate
- Washerless
- Packaged in Display Carton
- Replacement Parts:
004-699/3092 Replacement Stem

ORDER QUANTITY	COMPUTER NUMBER	TBA PART NUMBER	DESCRIPTION	SIZE	INNER PACK	MASTER PACK	WT
	004-640	RTFZ5 LPS-PB-PVD	Roman Tub Filler Less Personal Shower -Polished Brass-PVD		1	6	36
	004-641	RTFZ4 LPS-CP	Roman Tub Filler Less Personal		1	6	36



Lavatory Faucet - Wrist Blade Lever Handles

- 4" Centerset w/ABS Pop-Up
- Wrist Blade Lever Handles
- High-Quality Chrome Plated Finish
- 2.0 GPM at 60 PSI Maximum Flow Rate
- Washerless w/1/2" IPS Connections
- Packaged in Display Carton

ORDER QUANTITY	COMPUTER NUMBER	TBA PART NUMBER	DESCRIPTION	SIZE	INNER PACK	MASTER PACK	WT
	005-852	44626CP	Chrome Finish-ABS Pop-Up	4"	1	6	21



Tub And Shower Combination - Wrist Blade Lever Handles

- 1/2" IPS Connection Inlet
- Wrist Blade Lever Handles
- High-Quality Chrome Plated Finish
- Solid Brass Tub Spout
- Plastic Shower Arm & ABS Showerhead
- 2.5 GPM at 80 PSI Maximum Flow Rate
- Washerless
- Packaged in Display Carton

ORDER QUANTITY	COMPUTER NUMBER	TBA PART NUMBER	DESCRIPTION	SIZE	INNER PACK	MASTER PACK	WT
	005-853	26233CP	Tub and Shower - Chrome	8"	1	6	24



Bar Faucet

ORDER QUANTITY	COMPUTER NUMBER	TBA PART NUMBER	DESCRIPTION	SIZE	INNER PACK	MASTER PACK	WT
	201-0341	2BLDHCAPBAR	Chrome with Handicap Blade Handles	4"	1	6	34

Kitchen Faucet -Twin Wrist Blade Lever Handle With Spray

- 8" Centerset
- Washerless Twin Wrist-Blade Handle w/Spray
- High-Quality Chrome Plated Finish
- Solid Brass Construction
- 1/2" IPS Connections
- 2.0 GPM at 60 PSI Maximum Flow Rate
- Packaged in Display Carton
- Replacement Parts:
004-699/3092 Replacement Stem
002-679/0001 Seat & Springs
005-343/0039 Diverter



ORDER QUANTITY	COMPUTER NUMBER	TBA PART NUMBER	DESCRIPTION	SIZE	INNER PACK	MASTER PACK	WT
	201-0342	2BLDHCAPKIT	Kitchen Faucet Less Spray - Chrome	8"	1	6	

 Symbol Indicates Universally Accessible Products

Faucets & Bath Accessories

Lavatory Faucet - Single Control - Universally Accessible

- 4" Centerset
- Wrist Blade Lever Handle
- High-Quality Chrome Plated Finish
- 2.0 GPM at 60 PSI Maximum Flow Rate
- Washerless w/Stainless Steel Ball
- Packaged in Display Carton
- Replacement Parts:
002-686/0008 Stainless Steel Ball
002-679/0001 Seat & Springs



ORDER QUANTITY	COMPUTER NUMBER	TBA PART NUMBER	DESCRIPTION	SIZE	INNER PACK	MASTER PACK	WT
	005-642	40216CP	Single Lever with ABS Pop-Up - Chrome	4"	1	6	36

Tub And Shower Combination - Single Control - Universally Accessible

- 1/2" IPS Connection Inlet
- Universally Accessible Handle
- High-Quality Chrome Plated Finish
- Plastic Shower Arm, Face Plate & Tub Spout
- ABS Showerhead
- Matches Single Lever Lavatory
- 2.5 GPM at 80 PSI Maximum Flow Rate
- Washerless w/ Stainless Steel Ball
- Packaged in Display Carton
- Replacement Parts:
201-0009/0008 Stainless Steel Ball
002-679/0001 Seat & Springs



ORDER QUANTITY	COMPUTER NUMBER	TBA PART NUMBER	DESCRIPTION	SIZE	INNER PACK	MASTER PACK	WT
	005-643	12133CP	Single Lever/Tub and Shower - Chrome		1	6	24

Kitchen Faucet - Single Control

- 8" Centerset
- Washerless Single Lever
- High-Quality Chrome Plated Finish
- Solid Brass Construction
- 1/2" IPS Connections
- 2.0 GPM at 60 PSI Maximum Flow Rate
- Stainless Steel Ball
- Packaged in Display Carton
- Replacement Parts:
002-679/0001 Seat & Springs
201-0009 Stainless Steel Ball



ORDER QUANTITY	COMPUTER NUMBER	TBA PART NUMBER	DESCRIPTION	SIZE	INNER PACK	MASTER PACK	WT
	002-676	89210 CP	Kitchen Faucet, Less Spray - Chrome	8"	1	6	28
	002-677	89212 CP	Kitchen Faucet with Spray - Chrome	8"	1	6	29

Kitchen Faucet - Single Control With Spray On Deck

- 8" Centerset
- Washerless Single Lever w/Spray on Deck
- High-Quality Chrome Plated Finish
- Solid Brass Construction
- 1/2" IPS Connections
- 2.0 GPM at 60 PSI Maximum Flow Rate
- Stainless Steel Ball
- Packaged in Display Carton
- Replacement Parts:
002-679/0001 Seat & Springs
201-0009 Stainless Steel Ball



ORDER QUANTITY	COMPUTER NUMBER	TBA PART NUMBER	DESCRIPTION	SIZE	INNER PACK	MASTER PACK	WT
	002-678	89222 CP	Kitchen Faucet with Spray - Chrome	8"	1	6	29



Lavatory Faucet - Twin Handles Non-Metallic

- 4" Centerset
- Twin Acrylic Handles
- High-Quality Chrome Plated Finish on Non Metallic Material
- 2.0 GPM at 60 PSI Maximum Flow Rate
- Washerless w/1/2" IPS Connections
- Packaged in Plastic Bag w/Header Card

ORDER QUANTITY	COMPUTER NUMBER	TBA PART NUMBER	DESCRIPTION	SIZE	INNER PACK	MASTER PACK	WT
	002-977	ECP4400CP	Chrome Less Pop-Up	4"	1	12	10
	002-978	ECP4404CP	Chrome with ABS Pop-Up	4"	1	12	12

Non-Metallic Tub And Shower Combination - Twin Handle

- 1/2" IPS Connection Inlet
- Twin Acrylic Handles
- High-Quality Chrome Plated Finish
- Plastic Shower Arm, Tub Spout & ABS Showerhead
- 2.5 GPM at 80 PSI Maximum Flow Rate
- Matches Twin Handle Lavatory
- Washerless
- Packaged in Display Bag
- Replacement Parts:
004-699/3092 Replacement Stem
002-679/0001 Seat & Springs



ORDER QUANTITY	COMPUTER NUMBER	TBA PART NUMBER	DESCRIPTION	SIZE	INNER PACK	MASTER PACK	WT
	005-813	28532 CP	Tub and Shower - Chrome	8"	1	12	24

Non-Metallic Shower Combination - Twin Handle

- 1/2" IPS Connection Inlet
- Twin Acrylic Handles
- High-Quality Chrome Plated Finish
- Plastic Shower Arm & ABS Showerhead
- 2.5 GPM at 80 PSI Maximum Flow Rate
- Matches Twin Handle Lavatory
- Washerless
- Packaged in Display Bag
- Replacement Parts:
004-699/3092 Replacement Stem
002-679/0001 Seat & Springs



ORDER QUANTITY	COMPUTER NUMBER	TBA PART NUMBER	DESCRIPTION	SIZE	INNER PACK	MASTER PACK	WT
	005-812	28502 CP	Shower Only - Chrome	4"	1	12	24

Kitchen Faucet - Twin Handle With Spray Non-Metallic

- 8" Centerset
- Washerless Twin Acrylic Handle w/Spray
- High-Quality Chrome Plated Finish
- Non-Metallic Construction
- 1/2" IPS Connections
- 2.0 GPM at 60 PSI Maximum Flow Rate
- Packaged in Plastic Bag w/Header Card



ORDER QUANTITY	COMPUTER NUMBER	TBA PART NUMBER	DESCRIPTION	SIZE	INNER PACK	MASTER PACK	WT
	005-503	8702 CP	Kitchen Faucet with Spray - Chrome	8"	1	12	13
	005-502	8700 CP	Kitchen Faucet Less Spray - Chrome	8"	1	12	12

Faucets & Bath Accessories



Lavatory Faucet - Single Control

ORDER QUANTITY	COMPUTER NUMBER	TBA PART NUMBER	DESCRIPTION	SIZE	INNER PACK	MASTER PACK	WT
	005-500	49210NMCE	Chrome non-Metallic without Pop-Up	4"	1	24	22

Lavatory Faucet - Cross Handle

- 4" Euro-Style Centerset w/**Brass Pop-Up**
- Porcelain Cross Handles
- High-Quality Chrome & Polished Brass Plated Finish
- Solid Brass Construction
- 2.0 GPM at 60 PSI Maximum Flow Rate
- Washerless w/1/2" IPS Connections
- Packaged in Display Carton
- Replacement Parts:
004-699/3092 Replacement Stem
002-679/0001 Seat & Springs



ORDER QUANTITY	COMPUTER NUMBER	TBA PART NUMBER	DESCRIPTION	SIZE	INNER PACK	MASTER PACK	WT
	004-533	FD552BP	Cross Handle - Polished Brass	4"	1	6	21
	004-534	FD552CP	Cross Handle - Chrome	4"	1	6	21

Lavatory Faucet - French Lever Faucets

- 4" Contemporary Classic Design Centerset w/**Brass Pop-Up**
- Twin Lever Handles
- High-Quality Chrome & Polished Brass Plated Finish
- Solid Brass Construction
- 2.0 GPM at 60 PSI Maximum Flow Rate
- 1/4 Turn Ceramic Disc
- Packaged in Display Carton
- Replacement Parts:
004-699/3092 Replacement Stem



ORDER QUANTITY	COMPUTER NUMBER	TBA PART NUMBER	DESCRIPTION	SIZE	INNER PACK	MASTER PACK	WT
	005-498	2FRL 42-CP	French Lever - Chrome	4"	1	6	22
	005-499	2FRL 44-PB	French Lever - Polished Brass	4"	1	6	22



Single Lever Kitchen Pullouts

This Elegant Euro-Style provides convenience & Durability with features such as, Detachable Deck plate for one or three hole installation, extra long fastening shanks for solid surface installation, combined with ceramic disc technology for carefree maintenance, this pullout spout comes with a vacuum breaker and a 59" retractable hose. Available in Chrome, White & Satin Nickel Finishes.

ORDER QUANTITY	COMPUTER NUMBER	TBA PART NUMBER	DESCRIPTION	SIZE	INNER PACK	MASTER PACK	WT
	201-0540	TWS-SF	Satin Nickel Finish - Matching Spray Spout		1	6	48
	201-0541	TWS-WH	White Finish - Matching Spray Spout		1	6	48
	201-0542	TWS-CP	Chrome Finish - Matching Spray Spout		1	6	48

Faucets & Bath Accessories



Lavatory Faucet - Neo-Gothic

- Solid Brass w/**Brass Pop-Up**
- European-Type 1/4 Turn Ceramic Disc Cartridge
- Three Year Warranty on Finish
- Five Year Warranty on Parts for 4" Lavatory Center Sets

ORDER QUANTITY	COMPUTER NUMBER	TBA PART NUMBER	DESCRIPTION	SIZE	INNER PACK	MASTER PACK	WT
	004-694	2GLXTBA42-CHR	Lavatory Faucet - Chrome	4"	1	6	48



Lavatory Faucet - Neo-Gothic Wide Spread

- Solid Brass w/**Brass Pop-Up**
- European-Type 1/4 Turn Ceramic Disc Cartridge
- Polished Finish
- Three Year Warranty on Finish
- Five Year Warranty on Parts for 4" Lavatory Center Sets

ORDER QUANTITY	COMPUTER NUMBER	TBA PART NUMBER	DESCRIPTION	SIZE	INNER PACK	MASTER PACK	WT
	004-691	2GLWXTBA44-PB	Wide Spread Lavatory Faucet - Polished Brass	6"- 12" 1	4	36	



Tub And Shower Combination - Neo-Gothic

- Solid Brass Waterway w/Integral Stops
- European-Type 1/4 Turn Ceramic Disc Cartridge
- Polished Finish
- Three Year Warranty on Finish
- Five Year Warranty on Parts

ORDER QUANTITY	COMPUTER NUMBER	TBA PART NUMBER	DESCRIPTION	SIZE	INNER PACK	MASTER PACK	WT
	004-693	2GTSXTBA44-PB	Tub and Shower - Polished Brass	8"	1	4	48
	004-697	2GTSXTBA44-CHR	Tub and Shower - Chrome	8"	1	4	48



Water Drinking Faucets

ORDER QUANTITY	COMPUTER NUMBER	TBA PART NUMBER	DESCRIPTION	SIZE	INNER PACK	MASTER PACK	WT
	004-089	E3-WDF-102-8	Water Drinking Faucet			12	12

Faucets & Bath Accessories

Shower Head - Plastic, Water Saver, Adjustable And Swivel



ORDER QUANTITY	COMPUTER NUMBER	TBA PART NUMBER	DESCRIPTION	SIZE	INNER PACK	MASTER PACK	WT
	003-120	CDB 1011B	Polished Brass Shower Head			12	6

Shut Off Valve



ORDER QUANTITY	COMPUTER NUMBER	TBA PART NUMBER	DESCRIPTION	SIZE	INNER PACK	MASTER PACK	WT
	004-035	B1081C	Chrome Shut Off Valve			12	1

Steel Installation Clamp For Recessed Bath Accessories

ORDER QUANTITY	COMPUTER NUMBER	TBA PART NUMBER	DESCRIPTION	SIZE	INNER PACK	MASTER PACK	WT
	004-513	BM5001-26-03	Installation Clamp			1	

Soap Dispenser

Chrome housing with plastic container.



ORDER QUANTITY	COMPUTER NUMBER	TBA PART NUMBER	DESCRIPTION	SIZE	INNER PACK	MASTER PACK	WT
	003-307	CD0051	Soap Dispenser		1	12	3



Faucet Repairs

These import TBA, Inc. faucet repair parts will fit TBA, Inc. faucets and most Delta and Peerless models. A water-saving faucet is designed for water volume not exceeding three gallons per minute at a water pressure of twenty pounds per square inch. Our TBA, Inc. faucets fall into the category of 2.75 GPM at 60 PSI. A standard non-water-saving faucet may deliver a water volume of approximately four to five gallons per minute at 60 PSI.

ORDER QUANTITY	COMPUTER NUMBER	TBA PART NUMBER	DESCRIPTION
	002-679	CDA 0001	4 pc set seats & springs for all models of TBA Lav/Kitchen/Tub & Shower faucets. (New Type) for TBA-Delta Peerless Delex Carded. 80212 kitchen models carded.
	005-343	CDA0039	Twin Handle Kitchen Faucet Diverter.
	002-694	CDA 0016	Seal kit, fits all Delta and TBA lever handle faucets, contains: 4 springs (2 old style, 2 new style) seats O-rings, CAM packing and wrench carded.
	201-0009	SS0008	Stainless Steel Ball
	002-709	CDA 4001	Hose and spray w/swivel connection -Carded
	002-710	CDA 4002	Spray head - Carded
	002-713	CDA 5003C	Chrome ABS Pop-Up Carded
	002-712	CDA 5003B	Polished Brass ABS Pop-Up Carded
	003-224	A5002C	Chrome on Brass Pop-Up
	003-226	A5002B	Polished. Brass on Brass Pop-Up
	002-708	CDA 2035C	Chrome single lever handle fits single control lavatory and kitchen faucets.
	005-921	2002CP	Handicap Blades - 2 each

Faucets & Bath Accessories

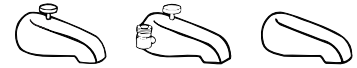
Bath Diverter Stem

For diverter to control direction of the water flow for 3-valve tub and shower faucets.



ORDER QUANTITY	COMPUTER NUMBER	TBA PART NUMBER	DESCRIPTION	SIZE	INNER PACK	MASTER PACK	WT
	003-745	CDA3079	Tub Diverter Cartridge			12	3

Bath Spout



ORDER QUANTITY	COMPUTER NUMBER	TBA PART NUMBER	DESCRIPTION	SIZE	INNER PACK	MASTER PACK	WT
	003-112	CDB1036C	Chrome Diverter Spout, Front Plunger		1	12	5
	003-114	CDB1036B	Polished Brass Diverter Spout, Ft. Plunger		1	12	5
	004-029	A1071C	Chrome Diverter Spout, Back Plunger		1	12	5
	003-117	CDB1037B	Polished Brass Filler Spout		1	12	5

Replacement Cartridge

Fits all washerless TBA, Inc. models.



ORDER QUANTITY	COMPUTER NUMBER	TBA PART NUMBER	DESCRIPTION	SIZE	INNER PACK	MASTER PACK	WT
	004-699	3092	Hot/Cold Cartridge			12	3

Stem Extension

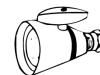
ORDER QUANTITY	COMPUTER NUMBER	TBA PART NUMBER	DESCRIPTION	SIZE	INNER PACK	MASTER PACK	WT
	004-675	88	Stem Extension for new style T/S			1	10

Shower Arm - 8" Plastic or Brass



ORDER QUANTITY	COMPUTER NUMBER	TBA PART NUMBER	DESCRIPTION	SIZE	INNER PACK	MASTER PACK	WT
	003-122	CDB 1034CPLA-C	Chrome Shower Arm Plastic			12	2
	003-738	CDB 1034BRA-B	Polished Brass Shower Arm Brass			12	3

Shower Head - 2-1/4" Solid Brass Water Saver



ORDER QUANTITY	COMPUTER NUMBER	TBA PART NUMBER	DESCRIPTION	SIZE	INNER PACK	MASTER PACK	WT
	003-295	CDB 1006B	Polished Brass Shower Head			12	10

Shower Head - Plastic Replacement For TBA Faucets



ORDER QUANTITY	COMPUTER NUMBER	TBA PART NUMBER	DESCRIPTION	SIZE	INNER PACK	MASTER PACK	WT
	004-023	B1012C	Chrome Shower Head 2 1/4" Dia.			12	8
	004-024	B1012PB	Polished Brass Shower Head 2 1/4" Dia.			12	8